

8/07/06

NE1/4 T1N R32E WM UMATILLA COUNTY SCALE 1"=1000'

AERIAL PHOTO NO. 3P-91, 180, 184, 134,139 & 4P-4 & 8

1N 32A

SEE MAP 2N 32

Co. Rd. Best Rd. (No. 417) No. 950

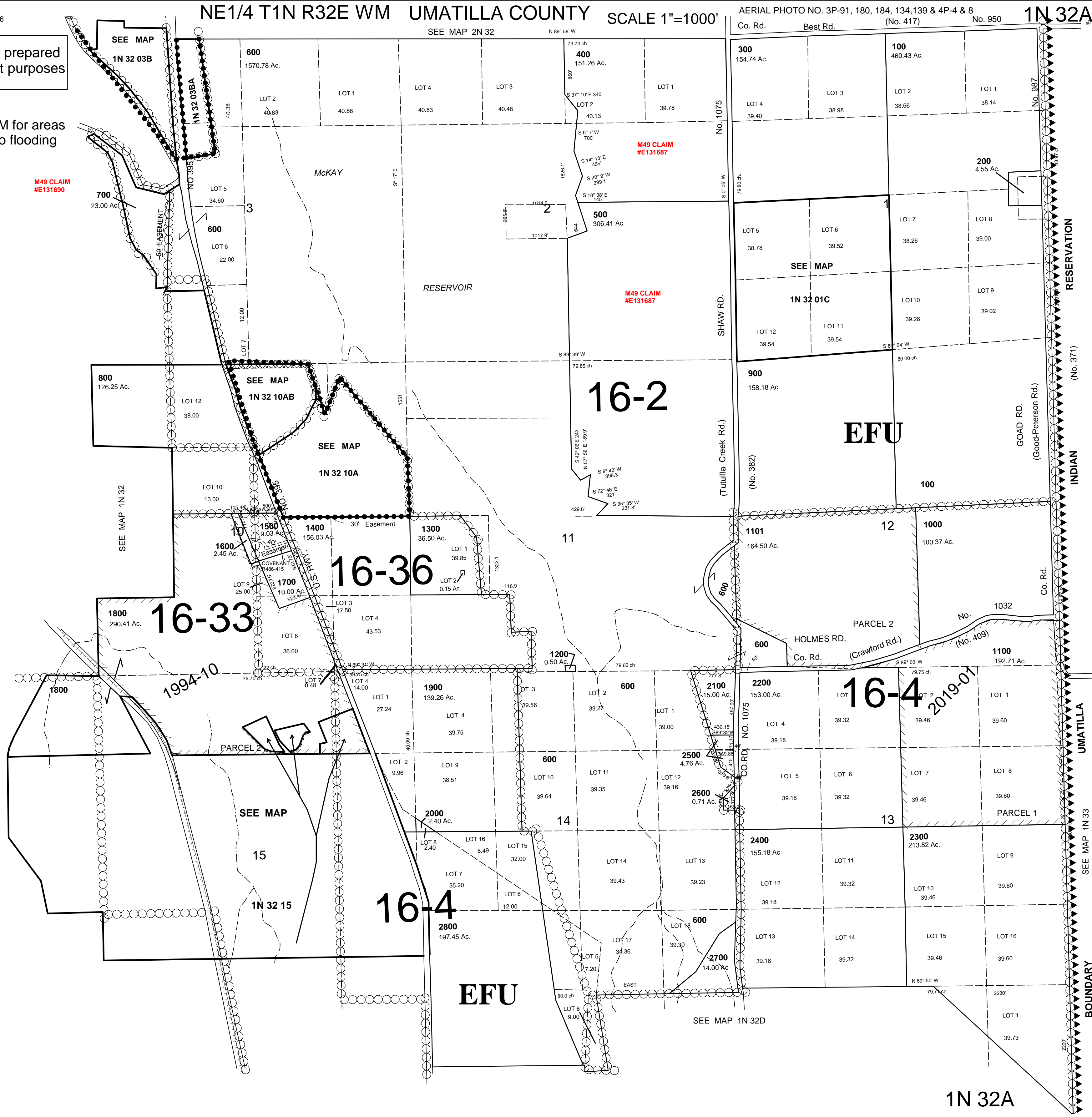
This map was prepared for assessment purposes

See FIRM for areas subject to flooding

M49 CLAIM #E131690

M49 CLAIM #E131687

M49 CLAIM #E131687



1N 32A