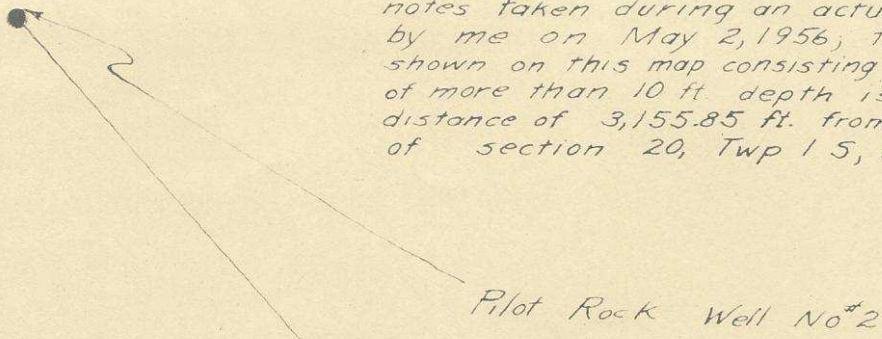


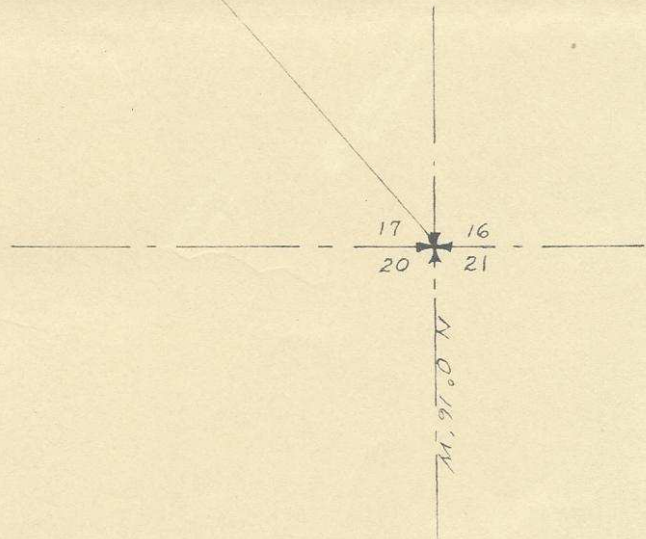
ENGINEERS CERTIFICATE

I, Stanley G. Wallulis of Pendleton, Oregon do hereby certify that this map was made from notes taken during an actual survey made by me on May 2, 1956; that the monument shown on this map consisting of a 10" well casing of more than 10 ft depth is N 41° 13' 35" W a distance of 3,155.85 ft. from the NE Corner of section 20, Twp 1 S, R 32 E W M.

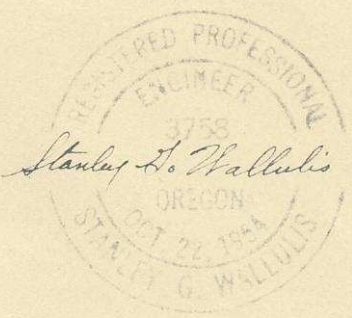


N 41° 13' 35" W  
3,155.85 ft

~~NE~~ SE 17



Q-876-AX



Survey for City of Pilot Rock  
SCALE: 1" = 400'      DATE: May 8, 1956

**WALL AND TENNESON**  
Engineers  
The Dalles      Oregon